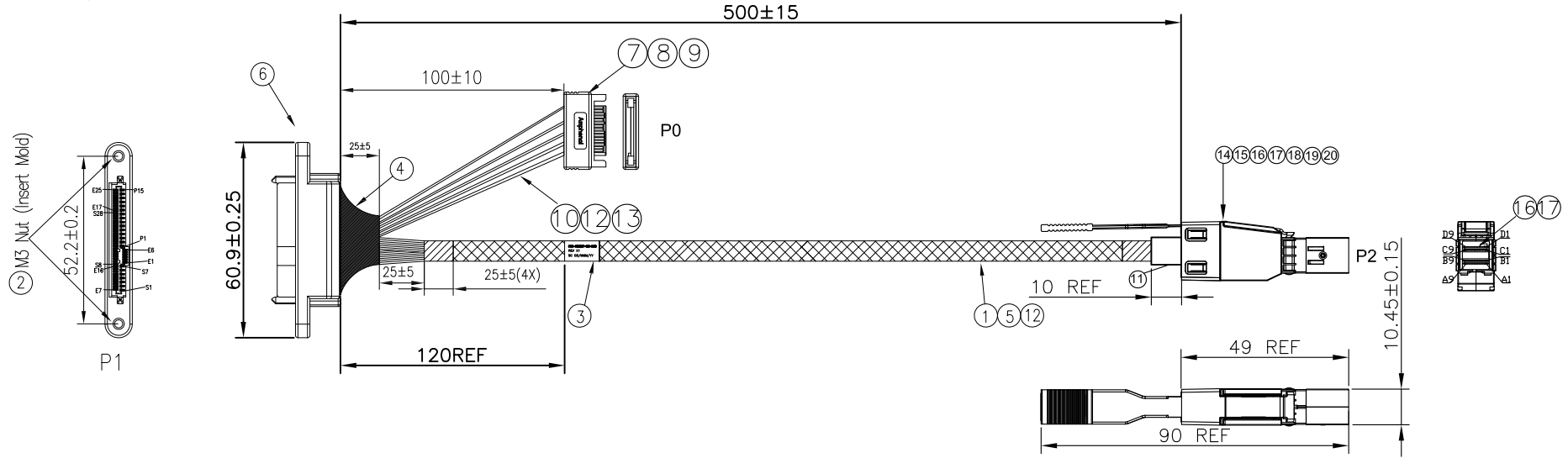


PROPRIETARY INFORMATION
COMPANY CONFIDENTIAL

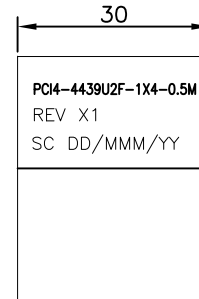
RoHS Compliant

REV.	ECN. NO.	DESCRIPTION	ENG	DATE
X1		FIRST INITIAL	Leon Sun	10/18/2019


- NOTE:
1. THE CABLE ASSEMBLY SHOULD BE RoHS2.0 COMPLIANT.
该产品通过RoHS2.0认证.
 2. ELECTRICAL AND MECHANICAL PERFORMANCE SHOULD MEET THE PCIE GEN4.0 INDUSTRIAL STANDARD.
电气特性遵循PCIE GEN4.0工业标准.
 3. THE CABLE ASSEMBLY SHALL MEET BELOW IMPEDANCE REQUIREMENT:
TERMINATION AREA: 85±15% OHMS, CABLE ABSOLUTE AREA: 85±10% OHMS.
该产品满足下面阻抗特性: 接触区域85±15%欧姆, 线材为85±10%欧姆.



20	53-021-0006&7	EXT.HD 4X LP EMI SPRING, SUS301	1
19	51-021-0002	EXT.HD 4X LP LATCH, SUS304	1
18	44-022-0005	EXT.HD 4X LP PULL TAB PA66 1300S GREEN	1
17	20-021-0006	EXT.HD 4X PCB C/D BOARD W/O IC, Au 30u"	1
16	20-021-0005	EXT.HD 4X PCB A/B BOARD, Au 30u"	1
15	50-021-0010	EXT.HD 4X LP TOP SHELL, ZINC ALLOY	1
14	50-021-0009	EXT.HD 4X LP BOT SHELL, ZINC ALLOY	1
13	H0330230CX	WIRE,30AWG,UL3302,1/0.254,0D0.55,FR-XLPE,VW-1,NO MARKING,HF	A/R
12	R100702401	WIRE,24AWG,UL1007,11/0.16,BLK,0D1.4,VW-1,AST logo,R2	A/R
11	60-005-0001	HOST SHRINK TUBING, φ9.5MM, EVA, BLACK	A/R
10	R10070180X	WIRE:18AWG,41C,UL1007	A/R
9	RMRPV45101	PVC,45P,V1,BLACK	A/R
8	10115M02	SATA CONN:15P,M,BRS,G/F,LCP,V0,BLK	2
7	HMRPE45NT1	PE:LOW DENSITY,CLEAR,HF	A/R
6	AST8639-001	8639 PCIE 68POS CONN,STR,BLACK,Au15u",HEPCBA0473	2
5	HMTBD07001	EXPANDO TUB:7.0MM,BLK,SINGLE(OD7~25MM),R2,HF	A/R
4	HMMTP00012	ACETATE TAPE:W=1INCH,HF	A/R
3	70-030-0001	LABEL 30*60MM	1
2	RMHNUT0032	NUT:STEEL 1215,Ni-plated,M3*0.5,HEX,L=2.3MM,R2	4
1	HWSS300133	SAS CBL:UL20744,30#2C+2D+A+HM,Silvered,85ohm,PP,BLU,VW-1,16G,HF	A/R
ITEM	VENDOR P/N	DESCRIPTION	QTY



LABEL DETAIL

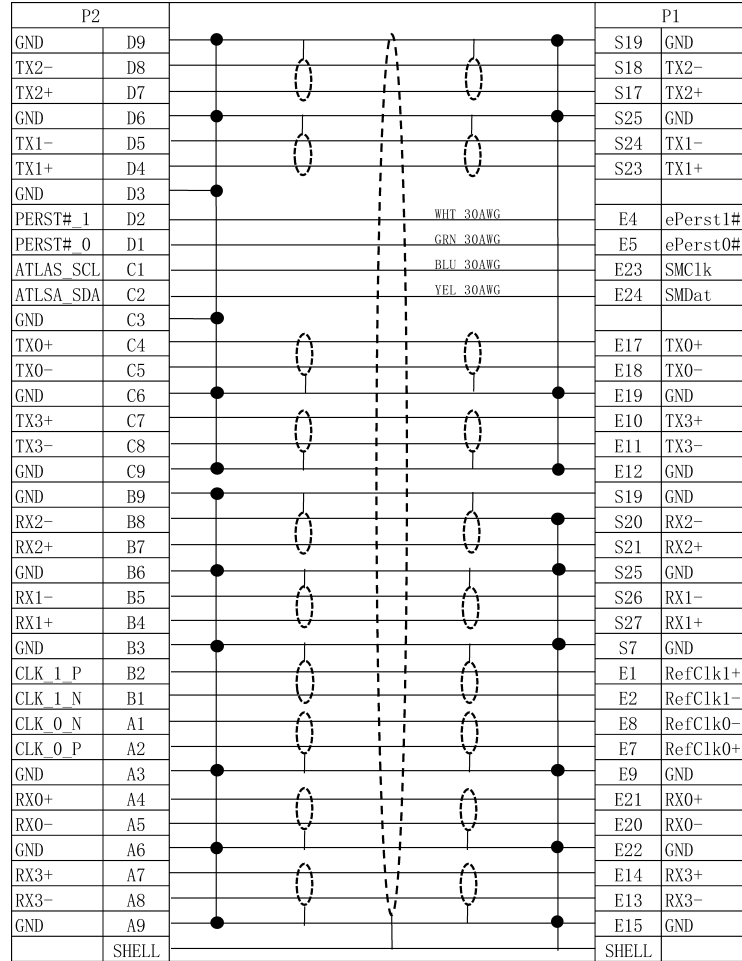
GENERAL TOLERANCE X.± 0.50 .X± 0.20 .XX± 0.10 .XXX± 0.05	ANGLE TOLERANCE X°± 5.0° .X°± 3.0° .XX°± 2.0° .XXX°± 1.0°	DRAWN Leon	DATE 10/18/2019	 TITLE: 4X HDMSAS TO SFF-8639 Connector
MATL SEE BOM	FINISH SEE NOTES	CHECKED Jordan	DATE 11/15/2019	
SCALE N/A	UNIT mm	APPROVED	DATE	DRAWING NO. 10-322110001-01
SHEET 1 OF 2				SIZE A4 REV. X1

PROPRIETARY INFORMATION
COMPANY CONFIDENTIAL

RoHS Compliant

REV.	ECN. NO.	DESCRIPTION	ENG	DATE
X1		FIRST INITIAL	Leon Sun	10/18/2019

WIRING TABLE



8639 U2 PCBA SCHEMATIC

(THE OTHERS IS PIN TO PIN)

CONNECTOR

PAD

PRSN#	P10	PRSN#	P10
IfDet#	P4	IfDet#	P4
+3.3Vaux	E3	+3.3Vaux	E3
S1R-/PERn1	S12	S1R-/PERn1	S12
S1R+/PERp1	S13	S1R+/PERp1	S13
S0R-/PERn0	S5	S0R-/PERn0	S5
S0R+/PERp0	S6	S0R+/PERp0	S6
DualPortEn#	E25	DualPortEn#	E25
DevSLP#	P3	DevSLP#	P3
Ground	E22	Ground	E22

P1

WHT		
	+3.3Vaux	E3
GRN	ePerst1#	E4
	ePerst0#	E5
	Reserved	E6
	Wake#	P1
	Dev_Reset	P2
	DevSLP#	P3
	IfDet#	P4
	Ground	P5
	Ground	P6
	+5V Precharge	P7
	+5V	P8
	+5V	P9
	PRSN#	P10
	Activity/Spinup	P11
	Ground	P12
	+12V Precharge	P13
	+12V	P14
	+12V	P15
	DualPortEN	E25

UL1007 24AWG BLK

UL1007 18AWG BLK

UL1007 24AWG BLK

UL1007 18AWG YEL

P0


4,5,6	GND
7,8,9	+5V
1,2,3	+3.3V
10,11,12	GND
13,14,15	+12V

NOTE:P1 GND GROUP:

E9,E12,E15,E19,E22,S1,S4,S7
S8,S11,S14,S16,S19,S22,S25,S28

OTHER:

E16,E25,P4,P10 IS OPEN

GENERAL TOLERANCE	ANGLE TOLERANCE	DRAWN	DATE	
X.± 0.50 .X± 0.20 .XX± 0.10 .XXX± 0.05	X°± 5.0° .X°± 3.0° .XX°± 2.0° .XXX°± 1.0°	Leon	10/18/2019	
MATL SEE BOM	FINISH SEE NOTES	CHECKED Jordan	DATE 11/15/2019	PART NUMBER: PC4-4439U2F-1X4-0.5M
SCALE N/A	UNIT mm	APPROVED	DATE	DRAWING NO. 10-322110001-01
SHEET 2 OF 2				SIZE A4 REV. X1