

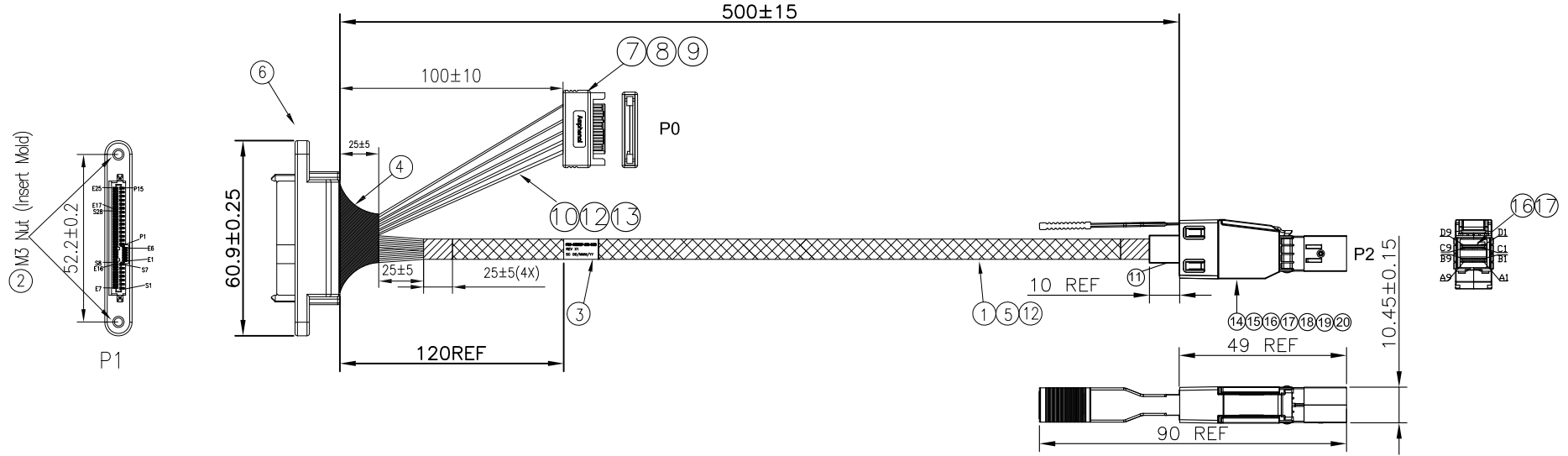
PROPRIETARY INFORMATION  
COMPANY CONFIDENTIAL

RoHS Compliant

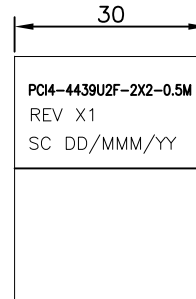
| REV. | ECN. NO. | DESCRIPTION   | ENG      | DATE       |
|------|----------|---------------|----------|------------|
| X1   |          | FIRST INITIAL | Leon Sun | 10/18/2019 |

NOTE:


1. THE CABLE ASSEMBLY SHOULD BE RoHS2.0 COMPLIANT.  
该产品通过RoHS2.0认证。
2. ELECTRICAL AND MECHANICAL PERFORMANCE SHOULD MEET THE PCIE GEN4.0 INDUSTRIAL STANDARD.  
电气特性遵循PCIE GEN4.0工业标准。
3. THE CABLE ASSEMBLY SHALL MEET BELOW IMPEDANCE REQUIREMENT:  
TERMINATION AREA: 85±15% OHMS, CABLE ABSOLUTE AREA: 85±10% OHMS.  
该产品满足下面阻抗特性: 接触区域85±15%欧姆, 线材为85±10%欧姆。



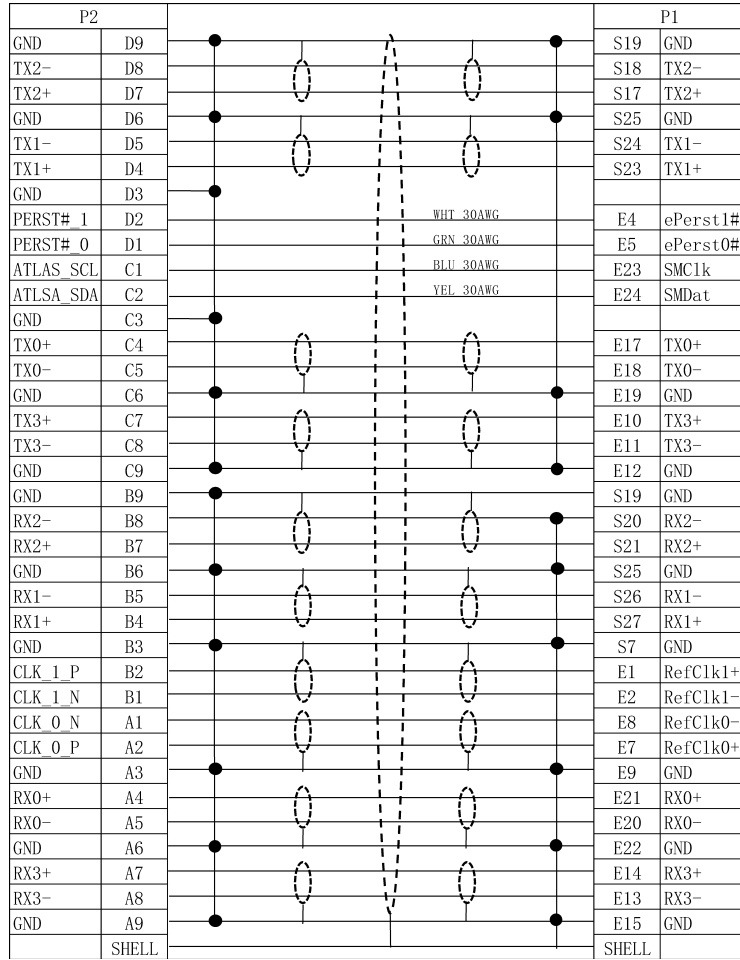
|      |               |   |     |
|------|---------------|---|-----|
| 20   | 53-021-0006&7 | EXT.HD 4X LP EMI SPRING, SUS301                                 | 1   |
| 19   | 51-021-0002   | EXT.HD 4X LP LATCH, SUS304                                      | 1   |
| 18   | 44-022-0005   | EXT.HD 4X LP PULL TAB PA66 1300S GREEN                          | 1   |
| 17   | 20-021-0006   | EXT.HD 4X PCB C/D BOARD W/O IC, Au 30u"                         | 1   |
| 16   | 20-021-0005   | EXT.HD 4X PCB A/B BOARD, Au 30u"                                | 1   |
| 15   | 50-021-0010   | EXT.HD 4X LP TOP SHELL, ZINC ALLOY                              | 1   |
| 14   | 50-021-0009   | EXT.HD 4X LP BOT SHELL, ZINC ALLOY                              | 1   |
| 13   | H0330230CX    | WIRE,30AWG,UL3302,1/0.254,0D0.55,FR-XLPE,VW-1,NO MARKING,HF     | A/R |
| 12   | R100702401    | WIRE,24AWG,UL1007,11/0.16,BLK,0D1.4,VW-1,AST logo,R2            | A/R |
| 11   | 60-005-0001   | HOST SHRINK TUBING, φ9.5MM, EVA, BLACK                          | A/R |
| 10   | R10070180X    | WIRE:18AWG,41C,UL1007   | A/R |
| 9    | RMRPV45101    | PVC,45P,V1,BLACK  | A/R |
| 8    | 10115M02      | SATA CONN:15P,M,BRS,G/F,LCP,V0,BLK                              | 2   |
| 7    | HMRPE45NT1    | PE:LOW DENSITY,CLEAR,HF   | A/R |
| 6    | AST8639-001   | 8639 PCIE 68POS CONN,STR,BLACK,Au15u",HEPCBA0473                | 2   |
| 5    | HMTBD07001    | EXPANDO TUB:7.0MM,BLK,SINGLE(OD7~25MM),R2,HF                    | A/R |
| 4    | HMMTP00012    | ACETATE TAPE:W=1INCH,HF   | A/R |
| 3    | 70-030-0001   | LABEL 30*60MM   | 1   |
| 2    | RMHNUT0032    | NUT:STEEL 1215,Ni-plated,M3*0.5,HEX,L=2.3MM,R2                  | 4   |
| 1    | HWSS300133    | SAS CBL:UL20744,30#2C+2D+A+HM,Silvered,85ohm,PP,BLU,VW-1,16G,HF | A/R |
| ITEM | VENDOR P/N    | DESCRIPTION   | QTY |



LABEL DETAIL

|  |   |                   |                    |  |
|--|---|-------------------|--------------------|--|
| GENERAL TOLERANCE<br>X.± 0.50<br>.X± 0.20<br>.XX± 0.10<br>.XXX± 0.05 | ANGLE TOLERANCE<br>X°± 5.0°<br>.X°± 3.0°<br>.XX°± 2.0°<br>.XXX°± 1.0° | DRAWN<br>Leon     | DATE<br>10/18/2019 | <br>TITLE:<br>4X HDMSAS TO SFF-8639 Connector |
| MATL<br>SEE BOM  | FINISH<br>SEE NOTES   | CHECKED<br>Jordan | DATE<br>11/15/2019 |  |
| SCALE<br>N/A   | UNIT<br>mm  | APPROVED          | DATE               | DRAWING NO.<br><b>10-3221110003-01</b>   |
| SHEET 1 OF 2   |   |                   |                    | SIZE<br>A4<br>REV.<br>X1   |

WIRING TABLE



8639 U2 PCBA SCHEMATIC

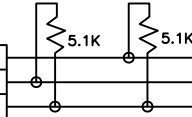
(THE OTHERS IS PIN TO PIN)

CONNECTOR

| PRsNT#      | P10 |
|-------------|-----|
| IfDet#      | P4  |
| +3.3Vaux    | E3  |
| S1R-/PERn1  | S12 |
| S1R+/PERp1  | S13 |
| S0R-/PERn0  | S5  |
| S0R+/PERp0  | S6  |
| DualPortEn# | E25 |
| DevSLP#     | P3  |
| Ground      | E22 |

PAD

| PRsNT#      | P10 |
|-------------|-----|
| IfDet#      | P4  |
| +3.3Vaux    | E3  |
| S1R-/PERn1  | S12 |
| S1R+/PERp1  | S13 |
| S0R-/PERn0  | S5  |
| S0R+/PERp0  | S6  |
| DualPortEn# | E25 |
| DevSLP#     | P3  |
| Ground      | E22 |



P1

| WHT | GRN |                 |     |
|-----|-----|-----------------|-----|
|     |     | +3.3Vaux        | E3  |
|     |     | ePerst1#        | E4  |
|     |     | ePerst0#        | E5  |
|     |     | Reserved        | E6  |
|     |     | Wake#           | P1  |
|     |     | Dev_Reset       | P2  |
|     |     | DevSLP#         | P3  |
|     |     | IfDet#          | P4  |
|     |     | Ground          | P5  |
|     |     | Ground          | P6  |
|     |     | +5V Precharge   | P7  |
|     |     | +5V             | P8  |
|     |     | +5V             | P9  |
|     |     | PRsNT#          | P10 |
|     |     | Activity/Spinup | P11 |
|     |     | Ground          | P12 |
|     |     | +12V Precharge  | P13 |
|     |     | +12V            | P14 |
|     |     | +12V            | P15 |
|     |     | DualPortEN      | E25 |
|     |     | Ground          | E22 |

UL1007 24AWG BLK

UL1007 18AWG BLK

UL1007 24AWG BLK

UL1007 18AWG YEL

P0

|          |       |
|----------|-------|
| 4,5,6    | GND   |
| 7,8,9    | +5V   |
| 1,2,3    | +3.3V |
| 10,11,12 | GND   |
| 13,14,15 | +12V  |

NOTE: P1 GND GROUP:  
E9,E12,E15,E19,E22,E25,S1,S4,S7  
S8,S11,S14,S16,S19,S22,S25,S28

OTHER:  
E16,P4,P10 IS OPEN

| GENERAL TOLERANCE                               | ANGLE TOLERANCE                                    | DRAWN    | DATE       |                                      |
|---|--|----------|------------|--------------------------------------|
| X.± 0.50<br>.X± 0.20<br>.XX± 0.10<br>.XXX± 0.05 | X°± 5.0°<br>.X°± 3.0°<br>.XX°± 2.0°<br>.XXX°± 1.0° | Leon     | 10/18/2019 |                                      |
| MATL SEE BOM                                    | FINISH SEE NOTES                                   | Jordan   | 11/15/2019 | PART NUMBER:<br>PC4-4439U2F-2X2-0.5M |
| SCALE N/A                                       | UNIT mm  | APPROVED | DATE       | DRAWING NO.<br>10-322110003-01       |
| SHEET 2 OF 2                                    |  |          |            | SIZE A4<br>REV. X1                   |