

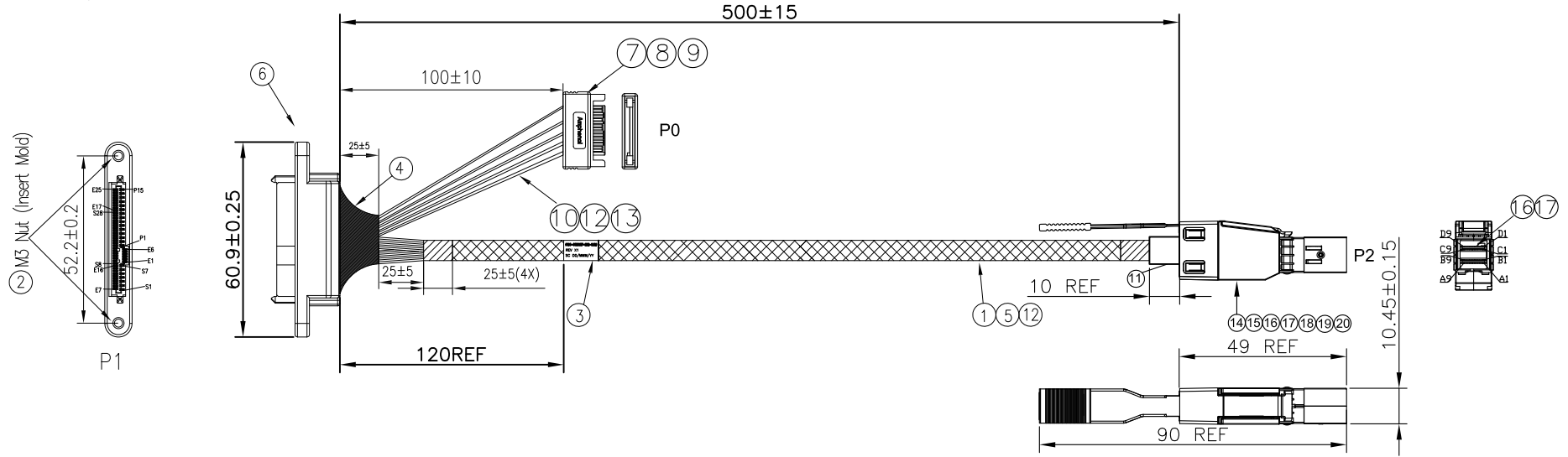
PROPRIETARY INFORMATION
COMPANY CONFIDENTIAL

RoHS Compliant

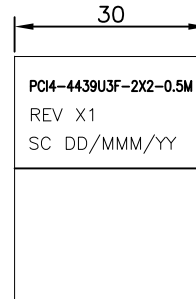
REV.	ECN. NO.	DESCRIPTION	ENG	DATE
X1		FIRST INITIAL	Leon Sun	10/18/2019

NOTE:


1. THE CABLE ASSEMBLY SHOULD BE RoHS2.0 COMPLIANT.
该产品通过RoHS2.0认证.
2. ELECTRICAL AND MECHANICAL PERFORMANCE SHOULD MEET THE PCIE GEN4.0 INDUSTRIAL STANDARD.
电气特性遵循PCIE GEN4.0工业标准.
3. THE CABLE ASSEMBLY SHALL MEET BELOW IMPEDANCE REQUIREMENT:
TERMINATION AREA: 85±15% OHMS, CABLE ABSOLUTE AREA: 85±10% OHMS.
该产品满足下面阻抗特性: 接触区域85±15%欧姆, 线材为85±10%欧姆.

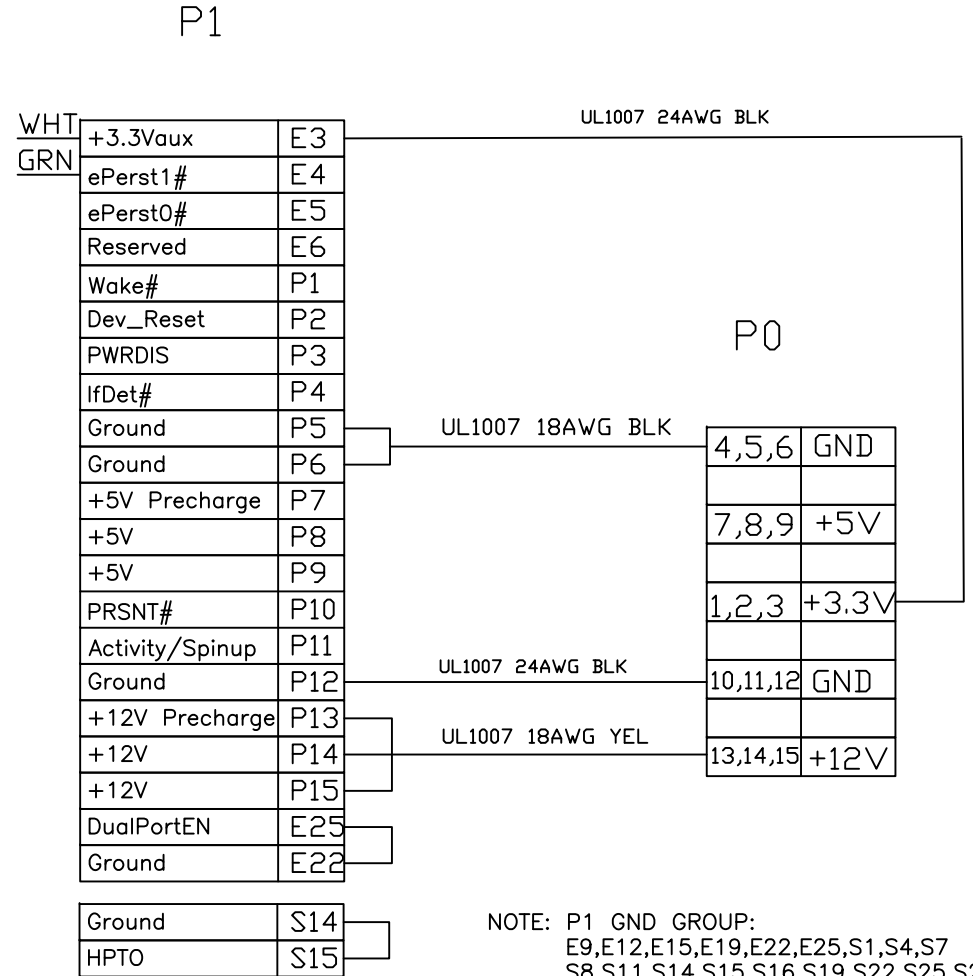
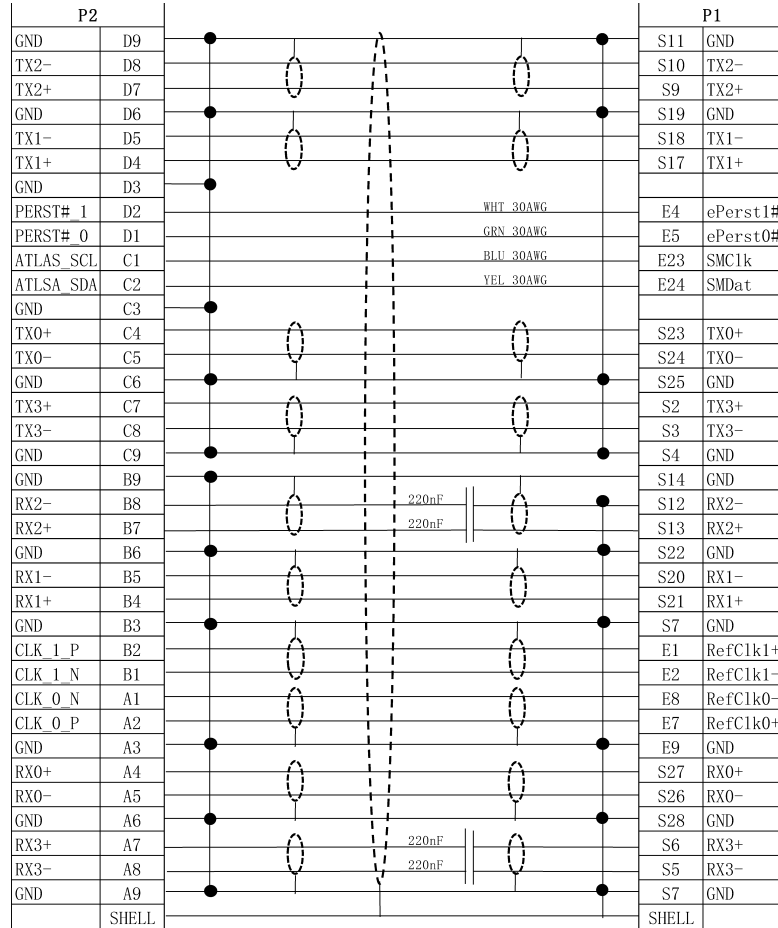


20	53-021-0006&7	EXT.HD 4X LP EMI SPRING, SUS301	1
19	51-021-0002	EXT.HD 4X LP LATCH, SUS304	1
18	44-022-0005	EXT.HD 4X LP PULL TAB PA66 1300S GREEN	1
17	20-021-0006	EXT.HD 4X PCB C/D BOARD W/O IC, Au 30u"	1
16	20-021-0005	EXT.HD 4X PCB A/B BOARD, Au 30u"	1
15	50-021-0010	EXT.HD 4X LP TOP SHELL, ZINC ALLOY	1
14	50-021-0009	EXT.HD 4X LP BOT SHELL, ZINC ALLOY	1
13	H0330230CX	WIRE,30AWG,UL3302,1/0.254,0D0.55,FR-XLPE,VW-1,NO MARKING,HF	A/R
12	R100702401	WIRE,24AWG,UL1007,11/0.16,BLK,0D1.4,VW-1,AST logo,R2	A/R
11	60-005-0001	HOST SHRINK TUBING, φ9.5MM, EVA, BLACK	A/R
10	R10070180X	WIRE:18AWG,41C,UL1007	A/R
9	RMRPV45101	PVC,45P,V1,BLACK	A/R
8	10115M02	SATA CONN:15P,M,BRS,G/F,LCP,V0,BLK	2
7	HMRPE45NT1	PE:LOW DENSITY,CLEAR,HF	A/R
6	AST8639-00X	8639 PCIE 68POS CONN,STR,BLACK,Au15u",HEPCBA0474	2
5	HMTBD07001	EXPANDO TUB:7.0MM,BLK,SINGLE(OD7~25MM),R2,HF	A/R
4	HMMTP00012	ACETATE TAPE:W=1INCH,HF	A/R
3	70-030-0001	LABEL 30*60MM	1
2	RMHNUT0032	NUT:STEEL 1215,Ni-plated,M3*0.5,HEX,L=2.3MM,R2	4
1	HWSS300133	SAS CBL:UL20744,30#2C+2D+A+HM,Silvered,85ohm,PP,BLU,VW-1,16G,HF	A/R
ITEM	VENDOR P/N	DESCRIPTION	QTY

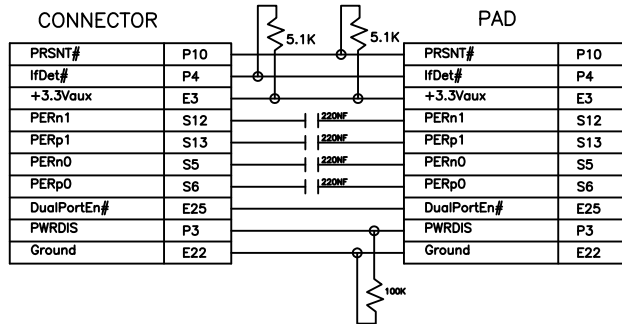


LABEL DETAIL


GENERAL TOLERANCE X.± 0.50 .X± 0.20 .XX± 0.10 .XXX± 0.05	ANGLE TOLERANCE X°± 5.0° .X°± 3.0° .XX°± 2.0° .XXX°± 1.0°	DRAWN Leon	DATE 10/18/2019	 TITLE: 4X HDMSAS TO SFF-8639 Connector
MATL SEE BOM	FINISH SEE NOTES	CHECKED Jordan	DATE 11/15/2019	
SCALE N/A	UNIT mm	APPROVED	DATE	DRAWING NO. 10-3221110004-01
SHEET 1 OF 2				SIZE A4 REV. X1



8639 U3 PCBA SCHEMATIC
(THE OTHERS IS PIN TO PIN)



NOTE: P1 GND GROUP:
E9,E12,E15,E19,E22,E25,S1,S4,S7
S8,S11,S14,S15,S16,S19,S22,S25,S28
OTHER:
E16,P4,P10 IS OPEN

GENERAL TOLERANCE	ANGLE TOLERANCE	DRAWN	DATE	
X.± 0.50 .X± 0.20 .XX± 0.10 .XXX± 0.05	X°± 5.0° .X°± 3.0° .XX°± 2.0° .XXX°± 1.0°	Leon	10/18/2019	
MATL SEE BOM	FINISH SEE NOTES	Jordan	11/15/2019	PART NUMBER: PC4-4439U3F-2X2-0.5M
SCALE N/A	UNIT mm	APPROVED	DATE	DRAWING NO. 10-322110004-01
SHEET 2 OF 2				SIZE A4 REV. X1